



The Institution of Engineers (India)
A Century of Service to the Nation

ALL INDIA SEMINAR on
Data Analytics: End-to-End AI
Solutions and Augmented Analytics
March 25 - 26, 2023, Ranchi



Organized by

The Institution of Engineers (India)
Jharkhand State Centre

Under the aegis of
Interdisciplinary Coordination Committee, IEI

In association with

About The Institution of Engineers (India)

The Institution of Engineers (India) or IEI is the largest multidisciplinary professional body that encompasses 15 engineering disciplines and gives engineers a global platform from which to share professional interest. IEI has membership strength of over 0.8 million. Established in 1920, with its headquarters at 8 Gokhale Road, Kolkata - 700020, IEI has served the engineering fraternity for over nine decades. In this period of time it has been inextricably linked with the history of modern-day engineering. In 1935, IEI was incorporated by Royal Charter and remains the only professional body in India to be accorded this honour. Today, its quest for professional excellence has given it a place of pride in almost every prestigious and relevant organization across the globe. IEI functions among professional engineers, academicians and research workers. It provides a vast array of technical, professional and supporting services to the Government, Industries, Academia and the Engineering fraternity, operating from 125 Centres located across the country. The Institution also provides grant-in-aid to its members to conduct research and development on engineering subjects.

IEI has been recognized as Scientific and Industrial Research Organization (SIRO) by the Ministry of Science & Technology, Government of India and besides conducting its own research, provides Grant-in- Aid to UG/PG/ Phd students of Engineering Institutes & Universities.

IEI holds the International Professional Engineers (IntPE) Register for India under the global International Professional Engineers Alliance (IntPEA). The Institution also awards the Professional Engineers (PE) Certification.

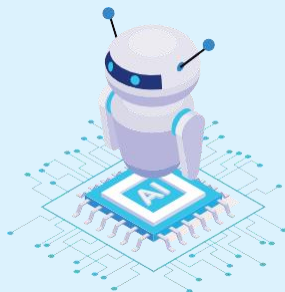
About Jharkhand State Centre

The Ranchi Sub-Centre of The Institution of Engineers (India) Was founded on 23rd July 1961 and over the years, the sub-centre was upgraded to Local Centre on 5th August 1983 and elevated to State Centre on 30th March 2001 after the creation of Jharkhand State. This centre was always striven to increase its various activities so as to cater fully the needs of the engineering fraternity at Ranchi. This centre has been actively engaged in articulating various technical matters, and on the engineer's role in society and as managers. In addition to various technical activities, this centre has been actively associated in organizing cultural programmes by the wives of the members (EWA) to inculcate bond among members and their families. All Statutory Days such as Engineers day, World Water Day, World Telecommunication and Information Society Day, World Environment Day, etc. are celebrated every year with family members.

From a little hut to a campus with a three storied building, two conference halls, each capable of seating 100 people, office, library, guest an auditorium for 300 people, 3 classroom for continuous education has been an impressive journey. This has been possible only due to the dedicated contributions of esteemed members, State Government, Public Sector Undertakings and Private Sector Organisations.

Jharkhand State Centre has been designated as 'A' category centre by The Institution of Engineers (India) with around 6000 corporate members and 7500 student members. This centre has been adjudged as 'Best Centre' for All Round Performance in the years 2007-08, 2008-09, 2010-11, 2015-16, 2016-17 and 2017-18 by The Institution of Engineers (India). Jharkhand State Centre has received All India Beat Technician Chapter Award for last four year in a row i.e. 2016-17, 2017-18, 2018-19 and 2019-20.

For more details please visit: www.ieijscjharkhand.org



Themes and Sub-themes

Data Analytics is the science of examining raw data with the purpose of drawing conclusions about that information. It involves applying algorithms or statistical tools to derive insights.

In today's world, data analytics plays a vital role in finding out trends and patterns at multiple points of reference for decision support. The growing volume of business data in the last three decades and complexity due to human intervention calls for an appropriate alignment of intelligent mathematical/statistical formulation to address the business problems.

This seminar aims a detailed understanding of the relationship among the variables, analysis of data for predictive or classification perspective, evaluating a fitted analytic model, and application of data analytic model in business domain. The seminar also aims to cover challenging thoughts in the space of concept, theories, and data analysis for framing and generating solutions for business problems. It is used in several industries to allow the organizations make better decisions as well as verify and disprove existing theories or models.

The focus of Data Analytics lies in inference, which is the process of deriving conclusions that are solely based on facts the analyst already knows. Data analytics helps organizations harness their data and use it to identify new opportunities. Which in turn, leads to smarter business moves, more efficient operations, higher profits and customer satisfaction. There is no single tool that encompasses data analytics but in reality, several types of tools work together to help get the most value from the information.

Sub-themes

- Provide insight into business data and analytics models that are useful for business decisions.
- Computing results from multiple decision models and determining the best one that supports organizational goals.
- Provide practical guidance to data analysis and the balance between analysis and managerial intuition.
- Deliberate and work on the latest happening of the Analytic world.

Call for Papers

All interested participants are requested to contribute technical/ research papers and case studies detailing concept, innovation, idea or practical experiences for oral as well a poster presentation. Each paper should begin with a synopsis of about 200 words and preferably within 3000 words excluding figures, tables and references. A brief bio-data (not more than half a page, affixing a photo) of the author(s) should accompany the paper.

Closing Date for Papers

Submission of Full Paper	:	11.03.2023
Communication of accepted paper	:	15.03.2023

Publications

Technical volume of the Seminar will be published incorporating all accepted papers including write-ups on the subject for general appreciation and made available to the registered participants.

Advertisement Tariff

BACK Cover Page	50,000 + 5% GST
Inside cover page	40,000 + 5% GST
full colour page	25,000 + 5% GST
full black & white page	20,000 + 5% GST
HALF PAGE	10,000 + 5% GST

Sponsorship

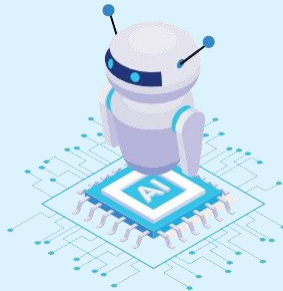
Category	Charge	Free Delegates	Ad in Souvenir
Platinum Sponsor	50,000 + GST	5	Full Page Colour
Gold Sponsor	40,000 + GST	4	Full Page B & W
Silver Sponsor	30,000 + GST	2	Half Page Colour
Kit (Co-Sponsor)	20,000 + GST	2	Half Page Colour
Lunch Sponsor	10,000 + GST	2	Half Page Colour
Dinner Sponsor	10,000 + GST	4	Full Page Colour

Account Details

“The Institution of Engineers (I) JSC”, payable at Ranchi
A/C No- 480102050000259
Name of Bank- Union Bank of India
Name of Branch- Shyamali Colony, Doranda, Ranchi
IFSC Code – UBIN0548014
by A/C Payee Cheque/Demand Draft /Net Banking

About Ranchi

Ranchi is the capital of state of Jharkhand, which is endowed with rich iron ore and coal deposits. With its rich mineral resources and industrial base, Ranchi is rapidly developing into an important industrial sector in India. The city is surrounded by thick forests and beautiful natural waterfalls and still unspoilt by modern commercialism. Ranchi is located in eastern part of India, around 400 km from Kolkata. It has very pleasant and cold climate throughout the year and the temperature in November may vary between +1°C and +2°C.



Travel

Domestic airlines operate between Ranchi and other major cities of India such as New Delhi, Mumbai, Kolkata, Bengaluru, Hyderabad, Raipur, Bhubneshwar and Patna. Ranchi is also well connected by rail and road with all major cities of the country, namely Bengaluru, Bhubaneshwar, Chennai, Hyderabad, Jamshedpur, Jaipur, Kolkata, Mumbai, Nagpur, Patna, Raipur, New Delhi, Vishakhapatnam, etc.

Accommodation

Ranchi offers a wide range of accommodation to suit every budget. Both economy and luxury class hotels are located within 5 km from the directly or through Seminar Venue. Delegates are requested to book the accommodation in advance to get preferred choice.

National Advisory Committee

Chairman: Er. Chinmay Debnath, FIE, President, IEI
Co-Chairman: Er. Shivanand Roy, Council Member, CVDB, & Chairman ICC
Members: Er. Bhupendra Nath Singh, Member,
Dr. (Ms) Gunnu Padmavathi, Member,
Er. Mahavir Bhavarilal Chopda, Member,
Er. Nripendra Nath Patwari, Member
Er. Raghunandan Prasad Sharma, Member

Advisory Committee

Chief Patron : Er. Chinmay Debnath, FIE, President, IEI
Patron : Er. Shivanand Roy, Council Member, CVDB, & Chairman ICC
Members : Er. Manoj Kumar, Honorary Secretary, IEI, JSC
Er. Jitendra Kumar, MECON Ltd, Ranchi
Er. Joyjeet Ghose, BIT Mesra, Ranchi
Er. Chandrakant Raipat, CMD, Rameshwaram Projects Pvt Ltd
Er. Sanjay Sen, MECON Ltd, Ranchi

Organising Committee

Chairman : Er. M. I. Alam, Chairman, IEI, JSC
Organising Secretary : Er. M.R. Kumar, G.M. Iron Making, MECON LTD, Ranchi
Convenor : Er. Priyam Mitra, MECON LTD, Ranchi
Members : Dr. Priyank Kumar, BIT Mesra, Ranchi
Md. Shakir, HEC Ltd, Ranchi

Technical Committee

Chairman : Er. Kunal Sinha, Founder Chairperson, Artificial Computing Machines
Co-Chairman : Dr. K.K. Senapati, Asst. Professor, BIT Mesra, Ranchi
Members : Dr. K. Sridhar Patnaik, Associate Professor, BIT Mesra, Ranchi
Dr. Itu Snigdha, Asst. Professor, BIT Mesra, Ranchi
Dr. Pooja Jha, HoD, AIIT, AMITY University, Ranchi
Tannisha Kundu, Asst. Professor, AIIT, AMITY University, Ranchi
Prof Arshad Usmani, Principal (In-Charge), CIT, Ranchi
Dr. Vinay Singh, Associate Professor, Usha Martin University, Ranchi

Address for Correspondence

Er. M. I. Alam

Chairman, IEI, JSC
Engineers Bhawan, Nepal Kothi Campus,
Doranda, Ranchi 834002, India
Phone: 0651-3510412
E-mail : jharkhandsc@ieindia.org

Dr. Manoj Kumar

Honorary Secretary, IEI, JSC
Engineers Bhawan, Nepal Kothi Campus,
Doranda, Ranchi 834002, India
Phone: 0651-3510412
E-mail : jharkhandsc@ieindia.org

Er. Priyam Mitra

Engineers Bhawan, Nepal Kothi Campus,
Doranda, Ranchi 834002, India
Phone: 0651-3510412
E-mail : jharkhandsc@ieindia.org



REGISTRATION FORM

All India Seminar on

Data Analytics: End-to-End AI Solutions and Augmented Analytics

March 25 - 26, 2023, Ranchi

To
The Hony. Secretary
The Institution of Engineers (India)
Jharkhand State Centre, IEI Engineer Bhawan
Nepar Koti Campus, Doranda
Ranchi - 834 002, India

Dear Sir,

The following persons may please be registered as delegates for participation in the above seminar to be held at Ranchi during March 25 - 26, 2023.

Sl No.	Name & Designation	Accompanying Spouse (Yes/No)	Category Registration (Organizational / Individual/ Educational Institute/Member IE(I)/ Student Member)
1.			
2.			
3.			
4.			
5.			
6.			

SUPPORT

Platinum Gold Silver
Dinner Lunch Kit Bag

SOUVENIR ADVERTISEMENT

* Back Cover outside (colour) * Back Cover inside (Colour)
* Front Cover inside (colour) * inside full Page (Colour)

Full Postal Address
Telephone / Fax / Mobile No.
E-mail address :

* Extra GST will be applied as per Brochure

(Signature with Date)
Name & Designation



The Institution of Engineers (India)

A Century of Service to the Nation



ALL INDIA SEMINAR on Data Analytics: End-to-End AI Solutions and Augmented Analytics

March 25 - 26, 2023, Ranchi

To, _____

From :

DR. MANOJ KUMAR

Honorary Secretary

The Institution of Engineers (India)

Jharkhand State Centre, Engineer Bhavan

Nepal Kothi Campus, Doranda

Ranchi - 834 002, India

Ph.: 0651-3510412